



WMF COFFEE MACHINES

Base Information

WMF 1200S Type 1200



1200S

WMF 1200S Type 1200

Application

Espresso, Milky Coffee and hot Chocolate and Tea Water.

Self Service machine for Offices and Self Service Stations

Capacity

For Outlets up to 100 Cups/Day

Service Period

Approximately 8,000 brewing

Specially for self-service operation

The WMF 1200S user guide was developed specially for the requirements of self-service operation. The keys arranged in a line above the coffee spout, a special cup stop and the design of the drip tray help the customer to select the desired product and place the cup in position. The 1800S is available in four version, with a water tank of 4.0 L or with a fix water connection.

If the machine is purchased for milky coffees like Cappuccino, a double frothier head and Plug Et Clean are standard.

If the machine is equipped with milk topping, there is no double milk frothier head available.

TECHNICAL DATA

Standard Models		With Grinder / Choc	With Grinder / Topping
Hourly Output	Espresso	80 Cups/h	80 Cups/h
	Café Crème	70 - 80 Cups/h	70 - 80 Cups/h
	Cappuccino	60 Cups/h	60 Cups/h
	Choc/Topping (optional)	50 Cups/h	50 Cups/h
Product Containers	Coffee Bean Hopper	500 g (one or two)	
	Choc Powder (optional)	~ 500 g (depending on powder)	
	Topping Powder	~ 500 g (depending on powder)	
Dimensions	Height x Width x Depth	682 x 324 x 554 mm	
	Weight	~ 33 - 35 kg	
Connections	Power Supply	1P/N/E 230 V, 2.2 kW	
	Water Supply	1/2" minimum 2.0 bar	
	Drainage	25 mm	
Options	Double Frothier Head	YES	NO
	Steam Wand	NO	NO
Accessories	Cup Rack	YES	YES
	Cup Et Cool	YES	NO
	Universal Milk Cooler	YES	NO

WMF AG Coffee Machines International 73312 Geislingen/Steige, Germany

Phone +41 7331 258482 Fax +41 7331 258792, Mail: professional@wmf.com, Web: <http://www.wmf.com>

Service Agent: RICMAS International Pte. Ltd. 25 International Business Park, German Centre #01-07/10, Singapore 609916

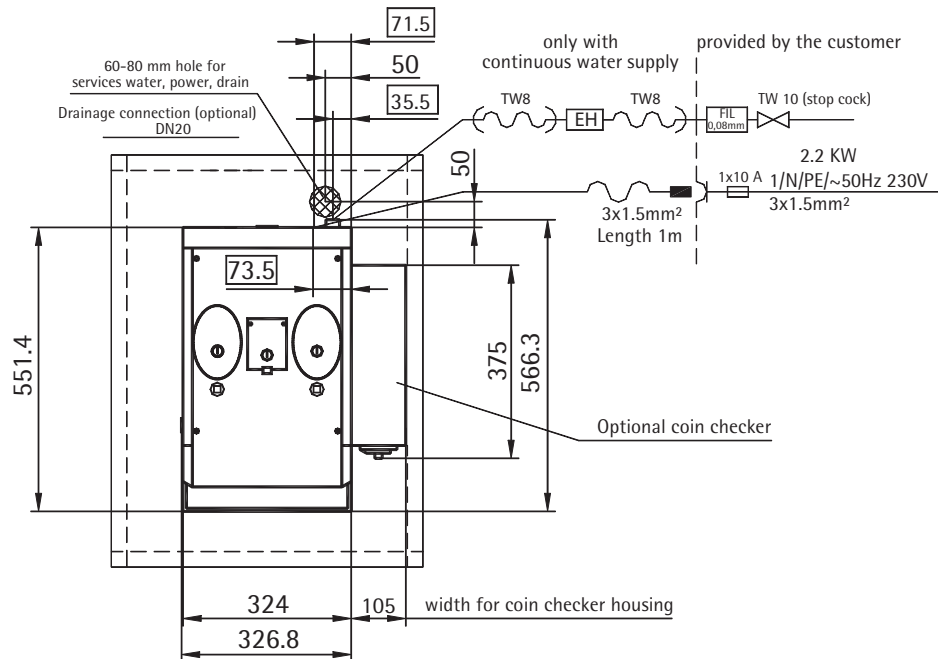
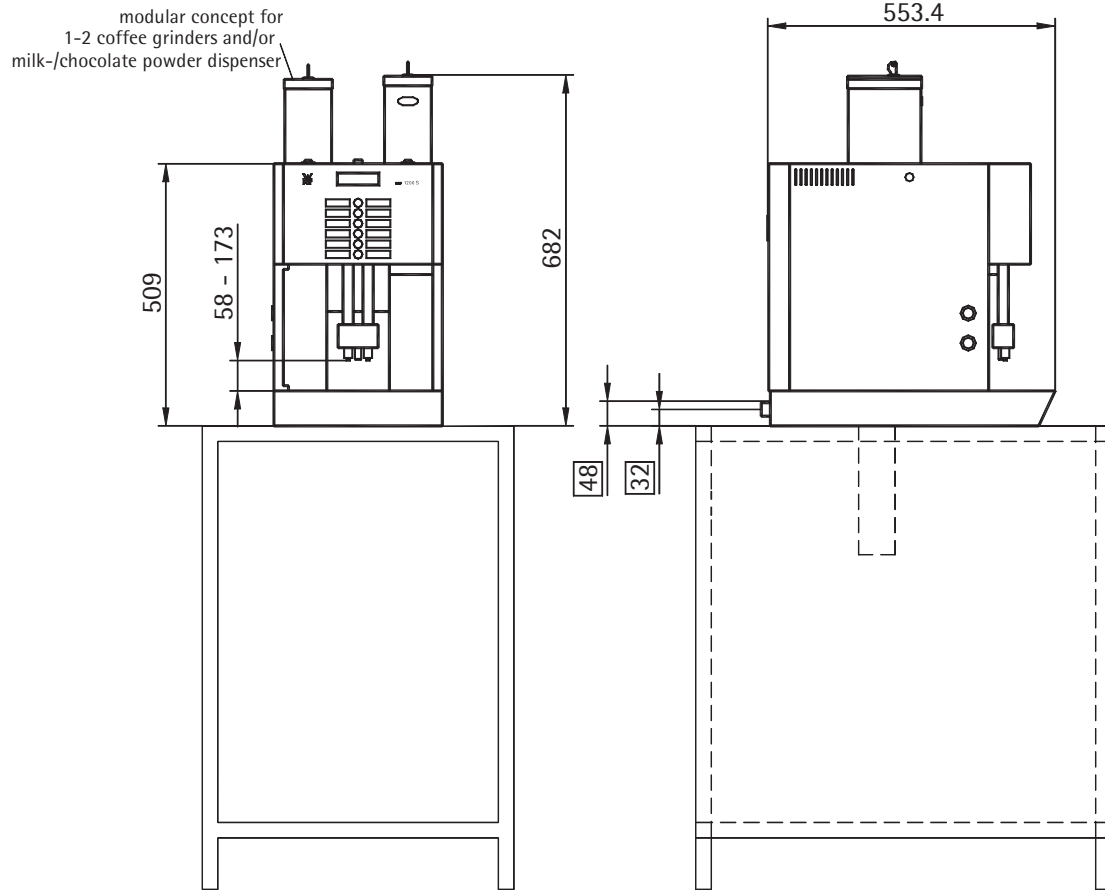
Phone: +65 65628853, Fax: +65 65628854, Mail: wmf@ricmas.com, Web: <http://www.ricmas.com>



WMF COFFEE MACHINES

Planing Information

WMF 1200S Type 1200



WMF AG Coffee Machines International 73312 Geislingen/Steige, Germany

Phone +41 7331 258482 Fax +41 7331 258792, Mail: professional@wmf.com, Web: <http://www.wmf.com>

Service Agent: RICMAS International Pte. Ltd. 25 International Business Park, German Centre #01-07/10, Singapore 609916

Phone: +65 65628853, Fax: +65 65628854, Mail: wmf@ricmas.com, Web: <http://www.ricmas.com>



WMF COFFEE MACHINES

Data Sheet

WMF 1200S Type 1200

Brewing process:	speciality coffees and drinking chocolate with and without milk or milk powder topping Drinking chocolate made of chocolate powder, hot water and addition of milk.
Daily output:	10 L hot water total output per day
Option:	Locks for grinders and milk-/chocolate dispensers, steam outlet, tank filter 33.2332.5000 for WMF 1200 S with water tank. Only for 1200 S equipped with continuous water supply, water filter BestmaxS, (dimensions 88 Ø x 370 mm) to optimise water quality and reduction of calcification.
Accessories:	multitool, cleaning brush, basic equipment decalcifier, cleaning tablets, milk cleaner.
Degree of protection:	IPX0
Protection class:	Protection class I
Perceptible heat emission:	0.05 kWh/h in standby mode 2.045 kWh/h in maximum mode
Cont. sound pressure level: (Lpa) < 70 dB (A)	
Water connection:	DN 10, (3/8") e.g. angle valve
Flow pressure:	with fixed water connection at least 0.2 MPa (2.0 bar), at 2 L min.
Miscellaneous:	coffee machine with dry residue discharge into an integrated drawer
Drain:	drip tray without drain. Optional drain DN 19, gradient at least 2%
Empty weight:	app. 30-35 kg depending on execution