



# WMF COFFEE MACHINES

## Base Information

### WMF 8000S Type 8800



### WMF 8000S Type 8800

#### Application

Espresso, Milky Coffee and hot Chocolate and Tea Water.

Also suitable for Self Service operation for Offices and Self Service Stations

ACTIVE MILK Option for cold Milk and Milk Foam

#### Capacity

For Outlets above 100 Cups/Day

#### Service Period

Approximately 20,000 brewing

The ultimate Speciality Espresso machine suitable for Self Service

The WMF 8000S equipped with a large 8" colour touch screen let you operate an Espresso machine without the help of a manual, as user guidance is all on screen.

Maximum four product hoppers let you prepare hot and cold beverages in a large variety. The new single or double outlet with the height adjustable tray let you prepare beverages into small cups and containers of up to 195 mm.

The automatic steam rod let you prepare milky coffees for baristas. A new tea water function prepares now tea at the perfect temperature.

## TECHNICAL DATA

Standard Models	3 kW	6 kW
Hourly Output*	Espresso 180 (248)	180 (248)
	Café Crème 136 (156)	136 (156)
	Cappuccino 179 (248)	179 (248)
	Choc/Topping 60 Cups/h	60 Cups/h
Product Containers	Coffee Bean Hopper 2 x 1,100g & 1 x 700g	
	Choc Powder 1,200g	
Dimensions	Width x Height x Depth 390 x 744 x 598 mm	
	Weight ~ 76 kg	
Connections	Power Supply 1P/N/E 230V 2.6 - 3.8 kW	3P/N/E 400V 6 - 7 kW
	Water Supply 1/2" minimum 2.0 bar	
	Drainage 25 mm	
Options	Double / Single Frothier Head YES	YES
	Automatic Steam Rod YES	YES
	Active Milk Option	Option
Accessories	Cup Rack YES	YES
	Cup & Cool YES	YES
	Universal Milk Cooler YES	YES

\* The number in brackets indicates capacity in double cup preparation only

WMF AG Coffee Machines International 73312 Geislingen/Steige, Germany

Phone +41 7331 258482 Fax +41 7331 258792, Mail: [professional@wmf.com](mailto:professional@wmf.com), Web: <http://www.wmf.com>

Service Agent: RICMAS International Pte. Ltd. 25 International Business Park, German Centre #01-07/10, Singapore 609916

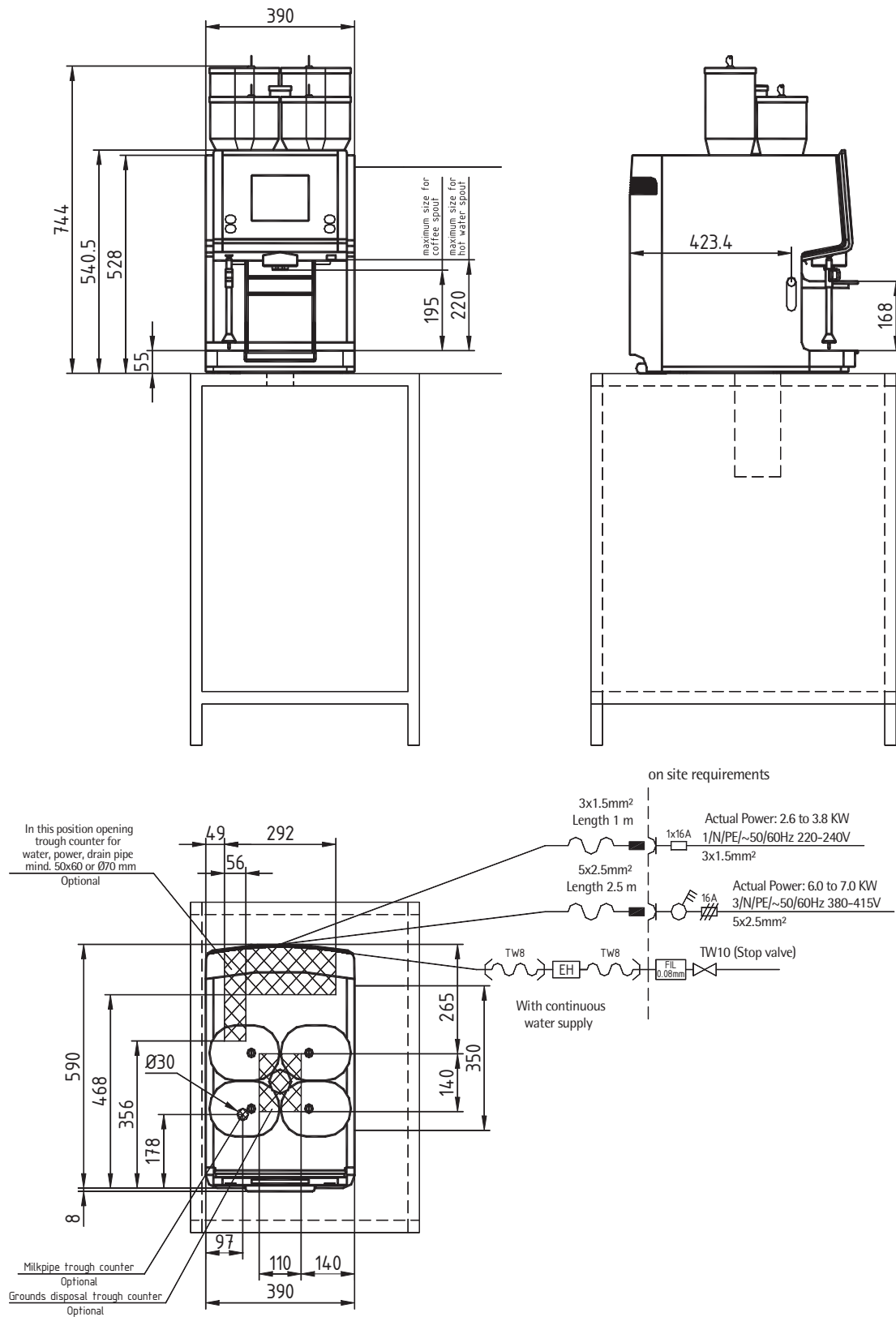
Phone: +65 65628853, Fax: +65 65628854, Mail: [wmf@ricmas.com](mailto:wmf@ricmas.com), Web: <http://www.ricmas.com>



# WMF COFFEE MACHINES

## Planing Information

### WMF 8000S Type 8800



WMF AG Coffee Machines International 73312 Geislingen/Steige, Germany

Phone +41 7331 258482 Fax +41 7331 258792, Mail: professional@wmf.com, Web: http://www.wmf.com  
 Service Agent: RICMAS International Pte. Ltd. 25 International Business Park, German Centre #01-07/10, Singapore 609916  
 Phone: +65 65628853, Fax: +65 65628854, Mail: wmf@ricmas.com, Web: http://www.ricmas.com



# WMF COFFEE MACHINES

## Data Sheet

### WMF 8000S Type 8800

Brewing process:	Speciality coffees and drinking chocolate with and without addition of milk. Hot chocolate made with chocolate powder, water and milk.
Daily output:	max. 248 cups/h of speciality coffees with or without added milk or milk foam, hot water 24L /h with 230 V, 48L /h with 400V
Option:	Active Milk for cold milk or cold milk foam, grounds disposal trough counter, chocolate dispenser 1.2 kg, big lockable bean container 1.1 kg, small lockable bean container 0.7 kg, stem tap, LED-Illumination in various colours, water filter, drain pipe connection DN 19mm. Plug & Clean
Accessories:	Multitool, cleaning brush, descaler, detergent tablets, milk system cleaner Cup Rack, Cup & Cool and various Milk Coolers
Degree of protection:	IPX0
Protection class:	Protection class I
Perceptible heat emission:	0.16 kW/h in standby mode 3.28 kWh/h in maximum mode for all types with rated power 3.5 kW 6.12 kWh/h in maximum mode for all types with rated power 6,4 kW
Cont. sound pressure level: (Lpa) < 70 dB (A)	
Water connection:	DN 10, (3/8") e.g. angle valve
Flow pressure:	with fixed water connection at least 0.2 MPa (2.0 bar), at 2 L min.
Miscellaneous:	coffee machine with dry residue discharge into an integrated drawer
Drain:	drip tray without drain. Optional drain DN 19, gradient at least 2%
Empty weight:	approximately 76 kg