



WMF COFFEE MACHINES

Base Information

WMF 1200F Type 1210



WMF 1200F Type 1210

Application

Filter Coffee and Tea Water.
Self Service machine for Offices and Self Service Stations

Capacity

For Outlets up to 100 Cups/Day

Service Period

Approximately 8,000 brewing

Specialist for freshly ground coffee

Filtered Coffee tastes best when it is made using freshly ground beans – exactly the way that WMF1200F does it! The perfect cup or larger volumes of filtered coffee can be prepared at high-speed: 0.5 litres of freshly ground and filtered coffee can be brewed in just 65 seconds. Thus filling up a large mug or thermal jug is just a matter of moments. Furthermore the optional quantity brewing arm allows dispensing of coffee into large insulated jugs. Whether it is used as additional equipment for a WMF specialty machine, to make coffee for breakfast or to provide coffee for large meetings and many guests, the WMF1200F ensures the outstanding coffee experience.

TECHNICAL DATA

Standard Models	Without Brewing Arm	With Brewing Arm
Hourly Output	Filter Coffee 80 Cups/h	80 Cups/h
Product Containers	Coffee Bean Hopper	500 g (one or two)
Dimensions	Height x Width x Depth	682 x 324 x 599 mm
	Weight	~ 33 - 38 kg
Connections	Power Supply	1P/N/E 230 V, 50/60 Hz, 3.1 - 3.7 kW
	Water Supply	1/2" minimum 2.0 bar
	Drainage	25 mm
Options	Milk	NO
	Steam Rod	NO
Accessories	Cup Rack	YES
	Thermos Container 2.4 L	NO
		YES

WMF AG Coffee Machines International 73312 Geislingen/Steige, Germany

Phone +41 7331 258482 Fax +41 7331 258792, Mail: professional@wmf.com, Web: <http://www.wmf.com>

Service Agent: RICMAS International Pte. Ltd. 25 International Business Park, German Centre #01-07/10, Singapore 609916

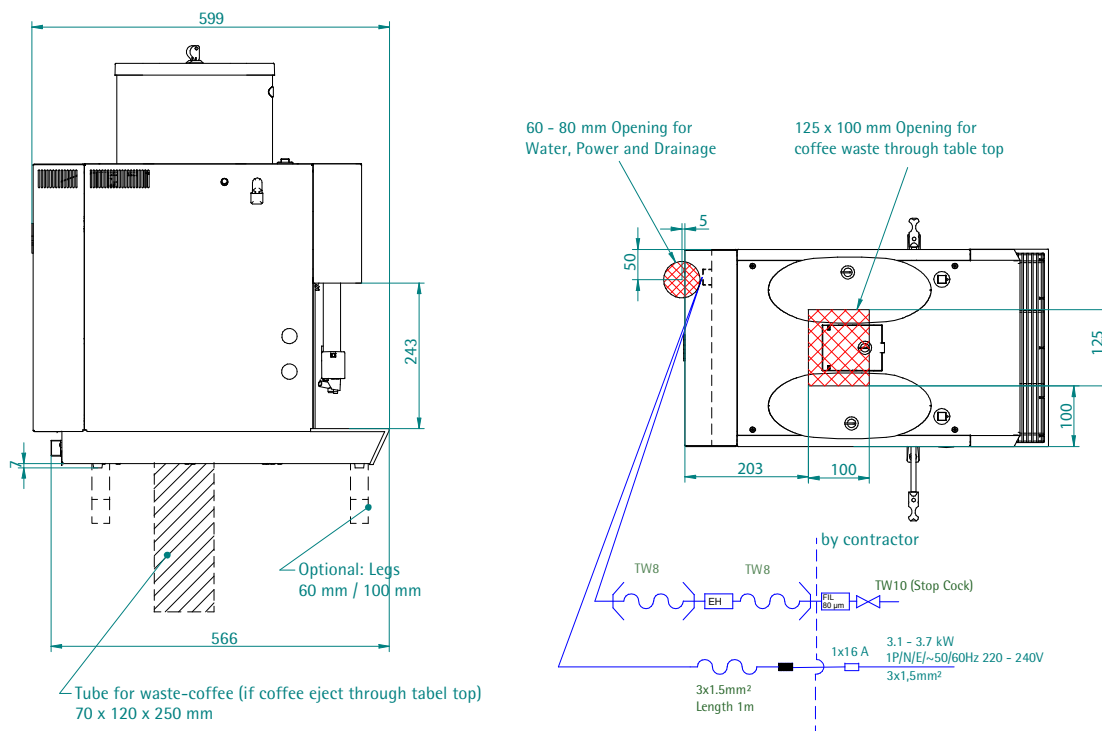
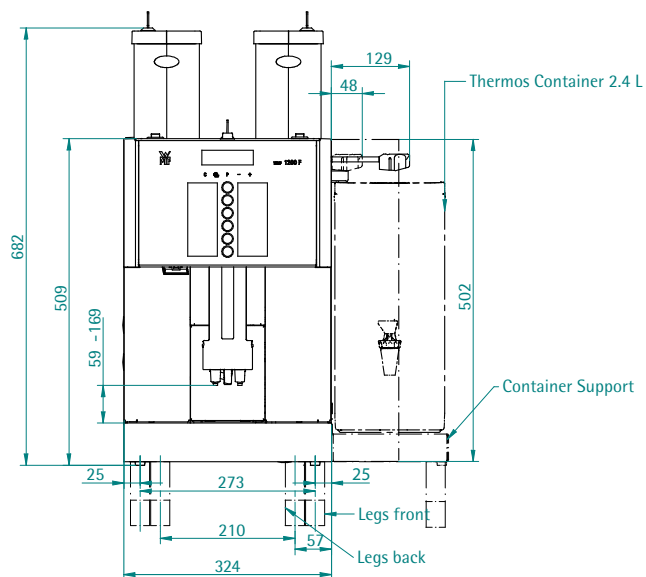
Phone: +65 65628853, Fax: +65 65628854, Mail: wmf@ricmas.com, Web: <http://www.ricmas.com>



WMF COFFEE MACHINES

Planing Information

WMF 1200F Type 1210





WMF COFFEE MACHINES

Data Sheet

WMF 1200F Type 1210

Brewing process:	Automatic brewing of filter coffee freshly ground
Daily output:	10 L hot water total output per day
Option:	Locks for grinders and milk-/chocolate dispensers, steam outlet, tank filter 33.2332.5000 for WMF 1200 S with water tank. Only for 1200 S equipped with continuous water supply, water filter BestmaxS, (dimensions 88 Ø x 370 mm) to optimise water quality and reduction of calcification.
Accessories:	multitool, cleaning brush, basic equipment decalcifier, cleaning tablets.
Degree of protection:	IPX0
Protection class:	Protection class I
Perceptible heat emission:	0.035 kWh/h in standby mode 3.1 - 3.7 kWh/h in maximum mode
Cont. sound pressure level: (Lpa) < 70 dB (A)	
Water connection:	DN 10, (3/8") e.g. angle valve
Flow pressure:	with fixed water connection at least 0.2 MPa (2.0 bar), at 2 L min.
Miscellaneous:	coffee machine with dry residue discharge into an integrated drawer
Drain:	drip tray without drain. Optional drain DN 19, gradient at least 2%
Empty weight:	app. 33-38 kg depending on execution